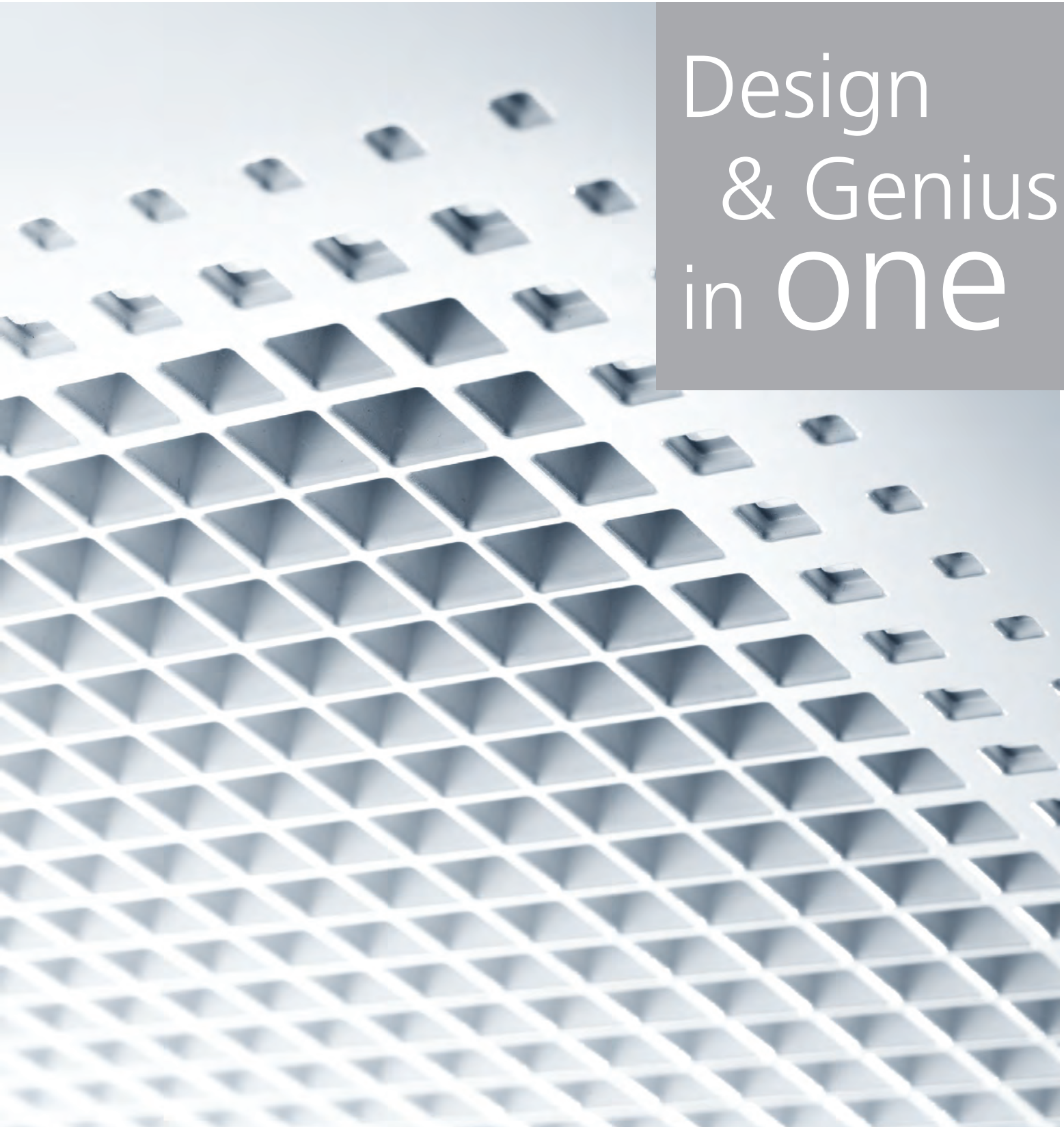




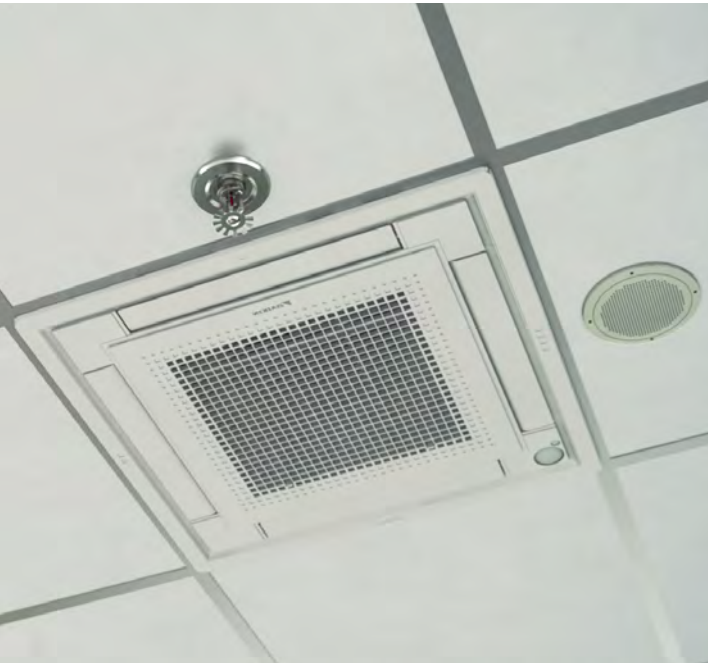
FFQ – FULLY FLAT CASSETTE

Design
& Genius
in **one**



Fully Flat Cassette

Design and genius in one



Daikin's Fully Flat Cassette is a powerful, efficient and discreet solution for commercial, retail and residential applications where both aesthetics and performance are paramount.

The Fully Flat Cassette combines the latest technology with innovative functions for high operating efficiency and user comfort, all within a unique design that allows the visible panel to fit flush within standard architectural ceiling panels.

Fully integrated, fully discreet

The Fully Flat Cassette is a unique iconic design with an elegant white finish with a white decoration panel. The cassette blends in, resulting in a fully discreet unit.

Fully flat with the ceiling

Daikin's Fully Flat Cassette is the first cassette that fits fully flat with the ceiling, making the unit blend discreetly in the ceiling.



Fits ceiling tiles perfectly

The newly designed panel integrates fully within one ceiling tile enabling lights, speakers and sprinklers to be installed in the adjoining ceiling tiles.



Differentiated by excellence

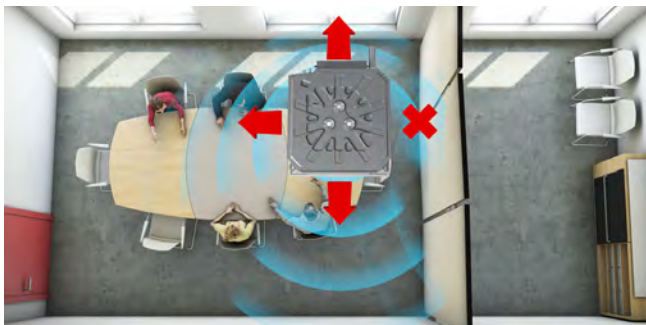
To ensure perfect interior comfort the Daikin Fully Flat Cassette can be fitted with an optional sensor* linked to an advanced controller.



When there is nobody in the room, the presence sensor* adjusts the set point or switches off the unit, avoiding unnecessary cooling or heating. When motion is detected the temperature is reset to its original setpoint ensuring perfect, energy efficient operation.

The sensor* also adapts the direction of the airflow depending of where people are situated in the room, ensuring no draught and individual comfort at any time.

Because hot air rises, the natural temperature distribution in a room is for it to be warmer near the ceiling and cooler near the floor. The cassette's 'floor' sensor* detects the temperature difference and re-directs the airflow to ensure that the temperature distribution is even.



Flexible solution

The need for flexible usage of space often means that temporary or permanent barriers are erected leaving the cassette close to a wall or in a corner with the resulting imbalances in airflow.

Our advanced technology anticipates this and we have made it possible to use the controller to individually open or close one of the four flaps to restore optimal efficiency and to save on energy costs.

Top efficiency year-round

Daikin's Fully Flat Cassette delivers exceptional performance and efficiency throughout the entire year. An optional presence sensor also helps deliver even greater operating efficiency

Air quality

The quality of the air in the room is as important as the temperature and we have fitted advanced filters to help remove dust particles to ensure the air is clean.

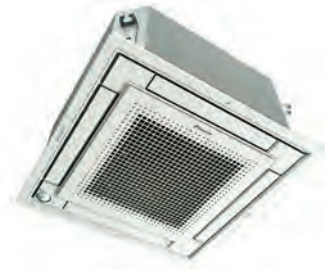
Quiet comfort

The Fully Flat Cassette is one of the quietest units in the light commercial market and, in addition to the sensors, has various functions that are designed to enhance user comfort.



**Additional sensor kit BRYQ60A2W required to enable this feature (floor and presence sensors included)*

Heating & Cooling



SkyAir

Perfect for light commercial applications

FFQ (Compact Cassette Type)						
INDOOR UNIT		FFQ25C2VEB	FFQ35C2VEB	FFQ50C2VEB	FFQ60C2VEB	
OUTDOOR UNIT		RXS25K3V1B	RXS35K2V1B	RXS50K2V1B	RXS60F4V1B	
Power Supply (Ph / Hz / V)		1 / 50 / 220-240				
Cooling Capacity (Rated / Range) *1		2.5 (1.3 - 3.2)	3.4 (1.9 - 4.0)	5.0 (2.1 - 6.0)	5.7 (2.2 - 6.7)	
Heating Capacity (Rated / Range) *1		3.2 (1.3 - 4.7)	4.0 (1.4 - 5.2)	5.8 (1.7 - 7.7)	7.0 (1.7 - 8.0)	
EER / COP		4.46 / 4.0	3.7 / 4.0	3.36 / 3.49	3.15 / 3.465	
AEER / ACOP		4.29 / 3.89	3.60 / 3.91	3.31 / 3.45	3.11 / 3.43	
INDOOR UNIT						
Dimensions (HxWxD)	mm	260 x 575 x 575 (+63)^				
Coil	Type	Cross Fin Coil (Multi Slit Fins and HI-XA Tubes)				
	Rows/Stages/Fin Pitch	2 / 12 / 1.2		3 / 16 / 1.2		
	Face Area	m ²	0.29		0.30	
Fan	Type	Turbo Fan				
	Motor Output	W	50			
	Fan Speed		3 Speeds			
Air flow rate (H/M/L)	m ³ /min	9/8/6.5	10/8.5/6.5	12/10/7.5	14.5/12.5/9.5	
Sound pressure (H/M/L) *3	dBA	31/28.5/25	34/30.5/25	39/34/27	43/40/32	
Sound power (H) *4	dBA	48	51	56	60	
Weight	Kg	16	16	17.5	17.5	
Piping	Liquid	mm	Ø 6.35			
	Gas	mm	Ø 9.52 (Flare)		Ø 12.7 (Flare)	
	Drain	mm	VP 20 (Ext Ø26, Int Ø20)			
Remote Control	Wired (Standard)		BRC 1E62			
	Wireless (Option)		BRC7F530W			
Fascia Panel	Model		BYFQ60C2W1W			
	Colour		White (N9.5)			
	Dimensions (HxWxD)	mm	46 x 620 x 620			
	Air Filter		Resin Net (with Mould resistance)			
	Weight	Kg	2.8			
OUTDOOR UNIT						
Colour		Ivory White				
Dimensions (HxWxD)	mm	550 x 765 x 285		735 x 825 x 300		
Coil	Type	Cross Fin Coil (Waffle Fins and HI-XU Tubes)				
	Rows/Stages/Fin Pitch	2 x 24 x 1.4		2 x 32 x 1.8		
	Face Area	m ²	0.425		0.595	
Compressor	Model	1YC23AEXDC		2YC36BXD#A		
	Type	Hermetically sealed swing type				
Fan	Type	Propeller				
	Motor Output	W	23	53		
Air flow rate (Nominal)	Cooling	L/s	558	600	848	
	Heating	L/s	472	750	772	
Weight	Kg	34	47	48	48	
Sound power *4	dBA	62	63	63	63	
Sound pressure (C/H) *3	dBA	46/47	48/48	48/48	49/49	
Piping	Liquid	mm	Ø 6.35			
	Gas	mm	Ø 9.52		Ø 12.7	
	Drain *2	mm	18			
Capacity Control	%	Compressor revolution speed control (inverter system)				
Safety Device		High Pressure switch. Fuse				
Refrigerant Control		Electronic Expansion Valve				
Ref. Piping	Max Length	m	20		30	
	Max Height Difference	m	15		20	
Refrigerant	Model		R410a			
	Factory charge	Kg	1	1.2	1.7	1.5
	Pre-charge length		10m			
	Additional Charge >10m	g/m	20			
Ref. Oil	Model		Refer to nameplate			
	Charge	L	0.375		0.65	

Notes: *1. The above data is based on the following conditions

Cooling	Heating	Piping Length	Volts, Hz
Indoor: 27° CDB 19° WB	Indoor: 20° CDB	5.0m (Horizontal)	230V, 50Hz
Outdoor: 35° CDB	Outdoor: 7° CDB 6° CWB		

*2. In case of drain for outdoor unit, drain piping kit (option) is needed

*3. Anechoic chamber conversion value, measured according to JIS parameters and criteria. During operation these values are somewhat higher due to ambient conditions.

*4. Numerical values according to ISO 3741:1999.

^ - Dimension including electrical box

Your Daikin Specialist Dealer:



Daikin Australia Pty Limited (ISO 9001)
QEC 23256 May 12, 2006
Sydney, Brisbane, Adelaide, Melbourne,
Newcastle, Townsville, Perth, Auckland

Daikin Australia Pty Limited (ISO 14001)
CEM 20437 October 27, 2006
Sydney, Brisbane, Adelaide, Melbourne,
Perth



Daikin Australia Pty. Limited
Australia – 62-66 Governor Macquarie Drv, Chipping Norton, 2170 – Australia
T. 1300 638 300 – commercial@daikin.com.au – commercial.daikin.com.au
New Zealand – Unit C, 525 Great South Rd, Penrose, Auckland – New Zealand
T. +64 9 571 1101 – commercial@daikin.co.nz